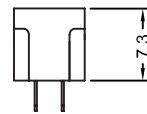
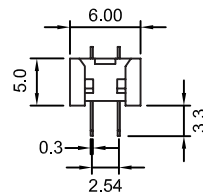
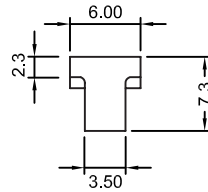
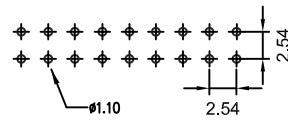


Recommended
P.C. Board Hole Layout



Specifications

Current Rating: 3 Amps
 Insulator Resistance: 1000 Megohms min. @ 500VDC
 Contact Resistance: 15 Millions ohms max.
 Operating Temperature: -40°C ~ +105°C
 Insulator Material: PBT +30% Glass Fiber (UL94V-0)
 Contact Plated: See options

Part Numbering System

MC - XX - S - X

Series _____
No. of Contact: _____
Contact Plating: _____
 S = Selective Gold (Standard)
 Gold over nickel underplate on contact area,
 Tin over copper underplate on IDC area
 T = Tin
 G = Full Gold Flash
Insulator Color: _____
 Nil = Black
 GRY = Grey

Contact	A	B	C
6	13.07	6.35	5.08
8	15.61	8.89	7.62
10	18.15	11.43	10.16
12	20.69	13.97	12.70
14	23.23	16.51	15.24
16	25.77	19.05	17.78
18	28.31	21.59	20.32
20	30.85	24.13	22.86
22	33.39	26.67	25.40
24	35.93	29.21	27.94
26	38.47	31.75	30.48
28	41.01	34.29	33.02
30	43.55	36.83	35.56
34	48.63	41.91	40.64
36	51.17	44.45	43.18
40	56.25	49.53	48.26
50	68.95	62.23	60.96
60	81.65	74.93	73.66
64	86.73	80.01	78.74

General Tolerance	
X. ± 0.50	X.° ± 5°
.X ± 0.20	.X° ± 2°
.XX ± 0.10	.XX° ± 1°
Units : mm	